



MACHINE VISION

SYSTEMS - SENSORS - SOFTWARE

COGNEX

THE GLOBAL LEADER

IN MACHINE VISION AND INDUSTRIAL BARCODE READING

Cognex®, the leading supplier of machine vision and industrial barcode reading solutions.

With over 3.5 million systems installed in facilities around the world and over 41 years of experience, Cognex is focused on industrial machine vision and image-based barcode reading technology. Deployed by the world's top manufacturers, suppliers, and machine builders, Cognex products ensure that manufactured items meet the stringent quality requirements of each industry.

Cognex solutions help customers improve manufacturing quality and performance by eliminating defects, verifying assembly, and tracking information at every stage of the production process. Smarter automation using Cognex vision and barcode reading systems means fewer production errors, which equates to lower manufacturing costs and higher customer satisfaction. With the widest range of solutions and largest network of global vision experts, Cognex is the best choice to help you **Build Your Vision.™**

**\$1.04
BILLION**
2021 REVENUE

OVER 41
YEARS IN THE BUSINESS

500+
CHANNEL PARTNERS

GLOBAL OFFICES IN
20+ COUNTRIES

3,500,000+
SYSTEMS SHIPPED





OPTIMIZE QUALITY, MINIMIZE WASTE, MAXIMIZE THROUGHPUT

Tens of thousands of applications worldwide inspect billions of products each day, many products that simply could not be manufactured without machine vision technology. Whether verifying the fill levels of soda bottles traveling on a conveyor, reading oil-stained codes on automotive parts or positioning touch screens on smartphones to micron-level accuracy, machine vision technology performs highly-detailed tasks on high-speed production lines.

Cognex's comprehensive line of sensors and 2D and 3D systems all use machine vision technology to perform inspections but are engineered for different tasks.



Vision Sensors



2D Vision



3D Vision

	Vision Sensors	2D Vision	3D Vision
Presence/Absence	✓	✓	✓
Defect Detection	✓	✓	✓
Assembly Verification	✓	✓	✓
Gauge/Measure	✓	✓	✓
Cosmetic Inspection		✓	✓
Guide/Align		✓	✓
OCR/OCV	✓	✓	
Code Reading		✓	

INDUSTRY-LEADING VISION TECHNOLOGY

Cognex machine vision provides the power and flexibility to solve your most challenging manufacturing applications. Whether for inspection or robotic guidance, you can choose from a robust library of AI- or rule-based technologies that include classification, defect detection, feature location, optical character recognition (OCR), measurement, and more.

Cognex AI

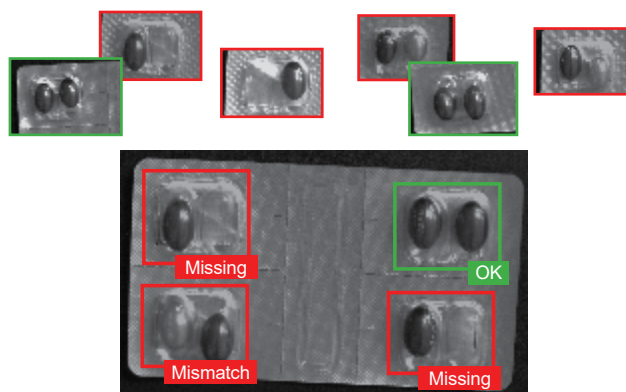
Cognex AI learns to spot patterns and anomalies from example images. It solves tasks that are too complicated and time-consuming to program with rule-based algorithms, while providing a consistency and speed that aren't possible with manual inspection.



Edge learning: Deploy in minutes

Edge learning is a subset of AI in which processing takes place on-device, or “at the edge,” using a pre-trained set of algorithms.

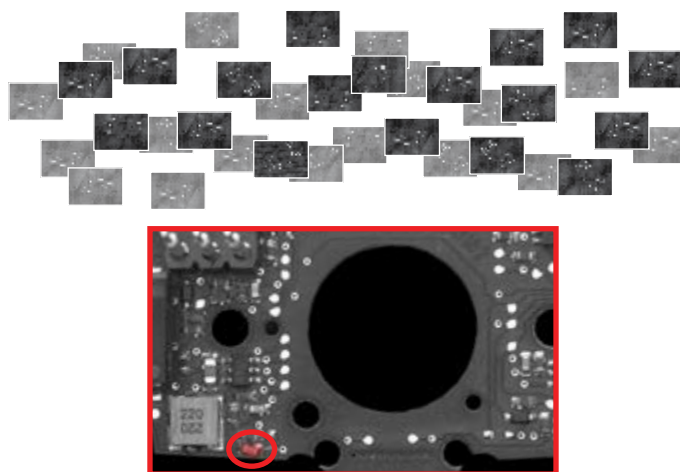
The technology is simple to setup, requiring smaller image sets and shorter training and validation periods than traditional deep learning-based solutions.



Deep learning: Analyze fine details

Capable of processing large, detailed image sets, deep learning is designed to automate complex or highly customized applications.

The technology enables users to analyze vast image sets quickly and efficiently, while differentiating between acceptable and unacceptable anomalies, to deliver accurate results.





Rule-based technologies

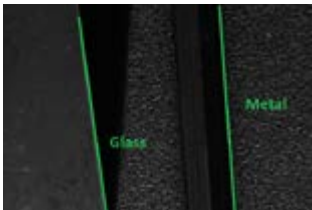
Cognex rule-based algorithms provide solutions for diverse applications from guiding assembly to automating inspections to expediting production and distribution. Designed for specialized tasks with consistency and low variation, these patented technologies are used in virtually all industry sectors to expedite and improve manufacturing.



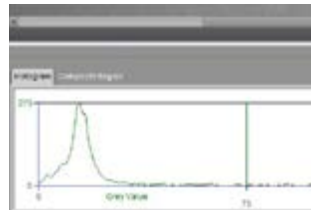
Object location
Find geometric patterns even under challenging conditions



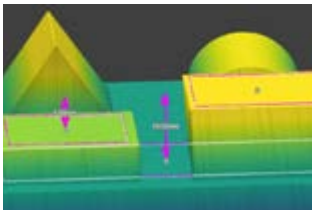
Bead inspection
Run high-precision inspections on beads and edges



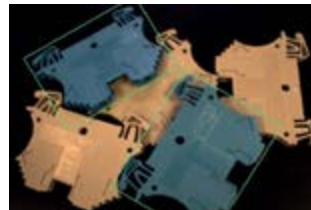
Edge inspection
Locate edges, features, and measure width



Histogram and image processing
Measure thresholds and prepare images for analysis



Measurement tools
Establish reliable feature-based parameters and thresholds



Color tools
Run color-based analysis for a range of inspection applications

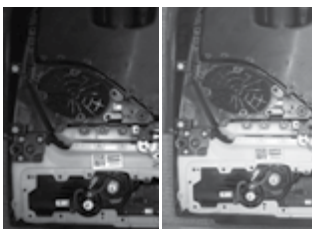


Identification
Ensure high read rates for 1D and 2D barcodes

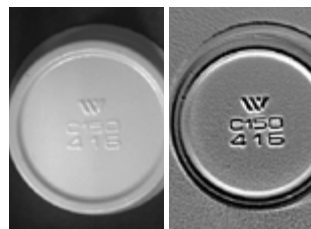


Optical character recognition
Automate character reading and decipher challenging text

Advanced imaging technologies



HDR+
Delivers high-contrast images for multi-point inspections of parts with varying depths of field and lighting conditions.



SurfaceFX
Isolates features and defects that are recessed or embossed on parts such as chips, wrinkles, punctures, stamped text, and codes.



2D VISION SYSTEMS

Cognex In-Sight 2D vision systems are unmatched in their ability to inspect, identify, and align parts. These self-contained, industrial-grade vision systems combine a library of advanced vision tools with high-speed image acquisition and processing. A wide range of models, including line scan and color systems, meet most price and performance requirements.

In-Sight 2800 Series

The In-Sight® 2800 vision system combines edge learning technology with traditional rule-based vision to solve a range of error-proofing tasks. From simple presence/absence detection to more advanced categorization and sorting applications, this fully integrated vision system offers an easy-to-use solution for automating inspections.

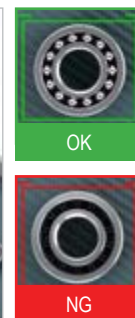
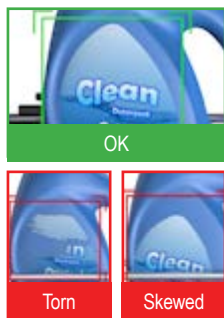
TOOL SET



RESOLUTION

Up to 1.6MP

FEATURES



In-Sight D900 Series

The In-Sight D900 vision system leverages advanced AI-based tools to solve challenging OCR, assembly verification, and defect detection tasks. Processing takes place on-device, which eliminates the need for a PC, simplifying application deployment and bringing the power of deep learning to non-programmers.

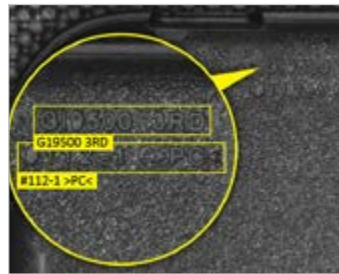
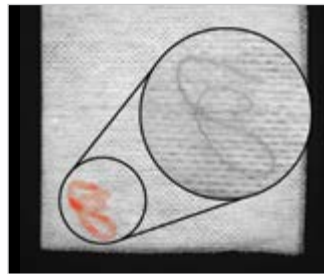
TOOL SET



RESOLUTION



FEATURES



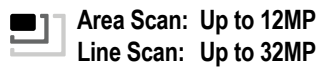
In-Sight 9000 Series

Rugged, ultra-high-resolution standalone vision systems equipped with a full suite of In-Sight vision tools solve high accuracy part location, measurement, and inspection applications. Line scan and area scan image acquisition options are available for imaging large continuously moving or stationary objects.

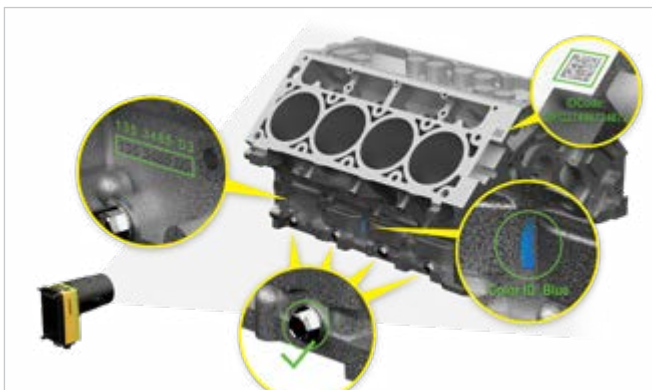
TOOL SET



RESOLUTION



FEATURES



In-Sight 8000 Series

Ultra-compact standalone vision systems deliver industry-leading vision-tool performance in the micro form factor of a typical GigE vision camera.

TOOL SET



RESOLUTION

Up to 5MP

AVAILABLE FEATURES



Monochrome/
Color



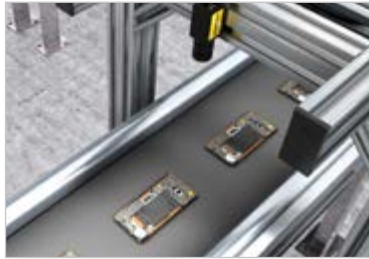
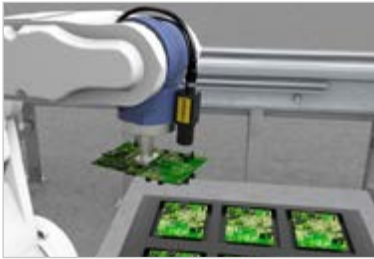
Micro



PoE



HDR+



In-Sight 7000 Series

Combines modular integrated lighting and optics for optimal image formation with powerful vision tools and ease of use in a compact footprint for fast, accurate inspections on space-constrained production lines.

TOOL SET



RESOLUTION

Up to 5MP

FEATURES



IP67



HDR+



Autofocus



VISION SENSORS

Vision sensors perform simple pass/fail applications that help ensure products and packaging manufactured on an automated production line are error-free and meet stringent quality standards. Cognex vision sensors provide highly reliable inspections thanks to powerful vision tools, integrated lighting, modularity, and an easy-to-use setup environment.

In-Sight 2000 Series

Ideal for solving error-proofing applications, these vision sensors set new standards for value, ease of use, and flexibility and can adapt to virtually any production line environment.



In-Sight 2000 Mini

All the power of the In-Sight 2000 vision sensor in an ultra-compact form factor allows users to deploy vision sensors in machines or production lines with limited mounting space.



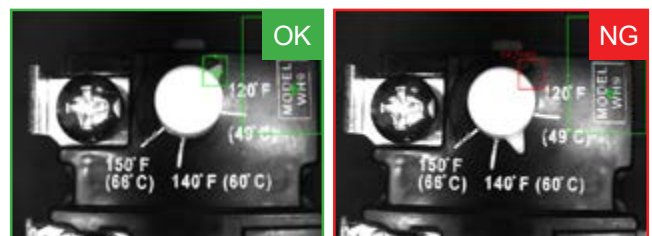
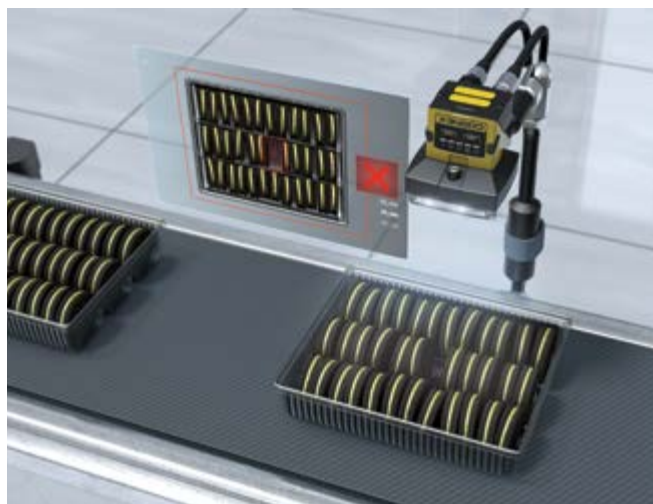
TOOL SET



RESOLUTION

Up to 1.2MP

FEATURES

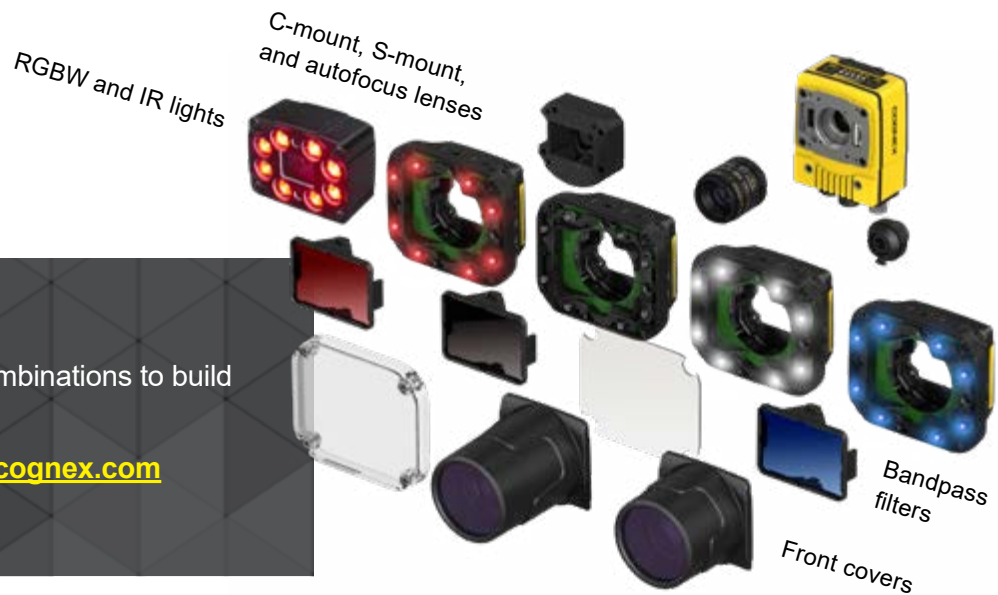


POWERFUL AND FLEXIBLE IMAGING TECHNOLOGY

Modular, scalable architecture for current and future needs

When it comes to factory automation, one size rarely fits all. That's why many In-Sight vision systems and sensors provide users with flexibility to customize the system for their specific application and easily adjust as needs change.

Field-changeable,
user-configurable
options



Build YOUR vision

Select from different combinations to build your custom solution.



configurator.cognex.com

Get better inspection results with the right imaging accessories

Multi-colored **LED lights** minimize the need for expensive external lighting and enhance specific features or text.

Polarizers reduce glare or hot spots and enhance contrast so entire objects can be recognized.

Color filters create contrast to lighten or darken features of the object.



Ambient light



Monochrome with blue light



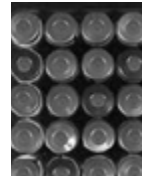
No filter



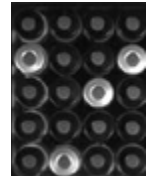
With linear polarizer



Original color



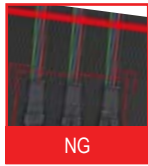
No filter



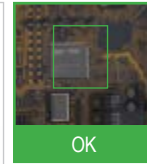
Blue Bandpass Filter

2D VISION APPLICATIONS

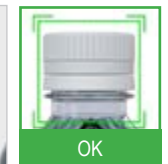
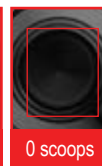
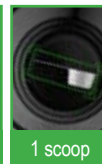
Automotive



Electronics







Food & Beverage



Pharmaceutical



2D VISION SPECIFICATIONS

	2000 Series	2800 Series	7000 Series	8000 Series	9000 Series	D900 Series
 Image						
Imager Type	Monochrome/Color Area Scan	Monochrome/Color Area Scan	Monochrome/Color Area Scan	Monochrome/Color Area Scan	Monochrome/Color Area Scan, Monochrome line scan	Monochrome/Color Area Scan
Resolution	Up to 1.2MP (1280 x 960)	Up to 1.6 MP (1440 x 1080)	Up to 5MP (2448 x 2048)	Up to 5MP (2448 x 2048)	12MP (4096 x 3000), 32MP (2048 x up to 16,384 lines) for line scan	Up to 5MP (2592 x 1944)
Acquisition Speed (Max)	75 fps	Up to 45Hz	Up to 217 fps	Up to 217 fps	Up to 14 fps, 66K lines per second for line scan	Up to 51 fps
 Options						
Lenses	S-Mount, Autofocus	S-Mount, Autofocus	C-Mount, S-Mount, Autofocus	C-Mount	C-Mount	C-Mount, S-Mount, Autofocus
Lighting	Integrated	Integrated	Integrated, External light via light control connector	N/A	External light via light control connector (area scan only)	Integrated, External lights via light control connector
 Networking						
Speed	Gigabit Ethernet (10/100/1000 Mbps)					
General Protocols	TCP/IP, UDP, FTP, Telnet, RS-232C	TCP/IP, FTP	TCP/IP, UDP, FTP, SFTP, Telnet, SMTP			TCP/IP, FTP
Industrial Protocols	OPC UA, EtherNet/IP with AOP, PROFINET Class B, iQSS, Modbus TCP, SLMP/SLMP Scanner, CC-Link IE Field Basic	PROFINET, EtherNet/IP, SLMP, OPC/UA	OPC UA, EtherNet/IP with AOP, PROFINET Class B, iQSS, Modbus TCP, SLMP/SLMP Scanner, CC-Link IE Field Basic, IEEE 1588 (CIP Sync)	OPC UA, EtherNet/IP with AOP, PROFINET Class B, iQSS, Modbus TCP, SLMP/SLMP Scanner, CC-Link IE Field Basic	OPC UA, EtherNet/IP with AOP, PROFINET Class B, iQSS, Modbus TCP, SLMP/SLMP Scanner, CC-Link IE Field Basic, IEEE 1588 (CIP Sync)	Ethernet/IP with AOP, Profinet Class A, Profinet Class B
 I/O						
Trigger input	1	1	1	1	1	1
General purpose input	1	1	1		1	1
General purpose output	4	2	2	2	2	2
Bi-Directional		2	2		2 (area scan only)	2
Encoder					2 (line scan only)	
Expansion I/O	CIO-1400		CIO-1400, CIO-Micro	CIO-Micro	CIO-1400, CIO-Micro	
Serial	RS-232C					

	2000 Series	2800 Series	7000 Series	8000 Series	9000 Series	D900 Series
 Mechanical						
Length	In-line: 92 mm (3.61 in), Right-angle: 61 mm (2.42 in)	In-line: Up to 110 mm (4.3 in), Right-angle: Up to 68 mm (2.7 in)	90.1 mm (3.54 in)	75.5 mm (2.97 in)	121.0 mm (4.77 in)	121.0 mm (4.77 in)
Width	60 mm (2.38 in)	Up to 69 mm (2.7 in)	60.5 mm (2.38 in)	35 mm (1.38 in)	60.5 mm (2.38 in)	60.5 mm (2.38 in)
Depth	52 mm (2.05 in)	Up to 104 mm (4.1 in)	Up to 2MP: 35.7 mm (1.41 in), 5MP: 49.4 mm (1.94 in)	32 mm (1.26 in)	53.4 mm (2.10 in)	53.4 mm (2.10 in)
Protection	IP65	IP67	IP67	IP40	IP67	IP67
 Vision Tools						
Cognex AI		✓				✓
Pattern Matching	✓	✓	✓ Available PatMax and PatMax RedLine			
Blob	✓		✓	✓	✓	✓
Edge	✓	✓	✓	✓	✓	✓
Measurement	✓	✓	✓	✓	✓	✓
1D/2D Code Reading			✓ IDMax®, PowerGrid®, Hotbars®	✓ IDMax, PowerGrid, Hotbars	✓ IDMax, PowerGrid, Hotbars	✓ IDMax
OCR	✓		✓	✓	✓	✓
Flaw Detection			✓	✓	✓	✓
Color Verification	✓		✓	✓	✓	✓
Color Identification			✓	✓	✓	✓
Histogram			✓	✓	✓	✓
Brightness	✓	✓	✓	✓	✓	✓
Pixel Counting	✓	✓	✓	✓	✓	✓
Contrast	✓	✓	✓	✓	✓	✓
Image Filters	✓	✓	✓	✓	✓	✓

3D VISION SYSTEMS

Whether performing a single profile measurement or scanning an entire surface in 3D, Cognex has the most powerful and robust 3D vision tools. Manufacturers in all industries trust Cognex technology to deliver high accuracy surface feature measurements that go beyond the capabilities of 2D vision technology.

In-Sight 3D-L4000 Series

A unique vision system combining 3D laser displacement technology with a high-performance smart camera allowing factory engineers to quickly, accurately, and cost effectively solve a wide variety of inspections thanks to a comprehensive suite of true 3D vision tools, easy setup, and speckle-free blue laser optics.

TOOL SET

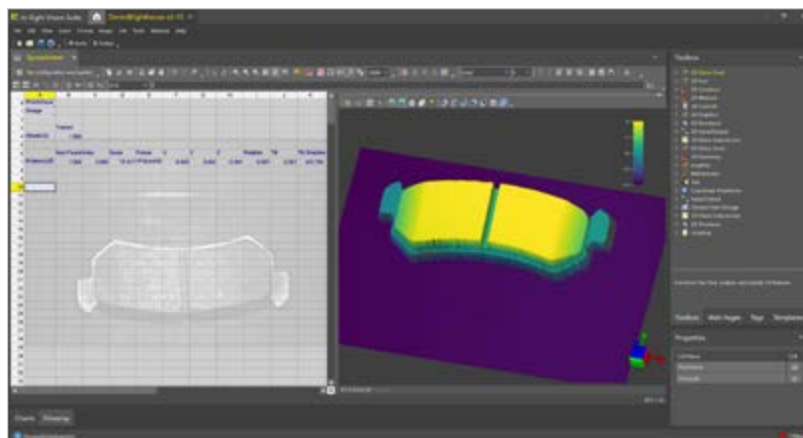
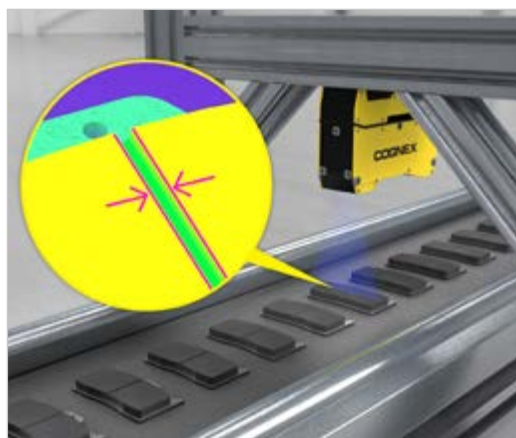


3D RESOLUTION



2000 points

FEATURES



3D-A5000 Series

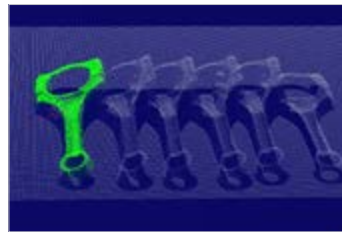
State-of-the-art area scan 3D camera captures high-resolution 3D point cloud images in a fraction of the time of current methods. Using unique 3D imaging technology, it solves challenging assembly verification, in-line metrology, and robotic guidance applications.



TOOL SET | 3D RESOLUTION



1.5 million points



FEATURES



3D-L4000 with VisionPro

Powerful laser displacement sensor with PC-based development environment performs fast, accurate 3D inspections, measurements, and OCR character reading. Equipped with industry-leading 3D vision tool and delivers results in real-world units.



TOOL SET | 3D RESOLUTION



960–1920 points

FEATURES



DS800 Series

Combining laser triangulation with advanced imaging, this easy-to-use displacement sensor generates highly-detailed 3D renderings of parts under inspection. Unique field calibration technology auto-corrects for errors to offer micron-level accuracy.



TOOL SET | 3D RESOLUTION



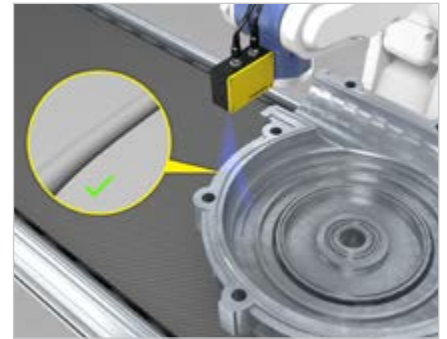
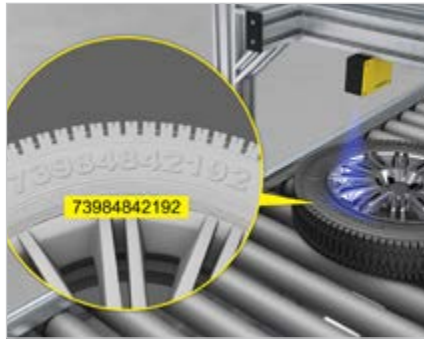
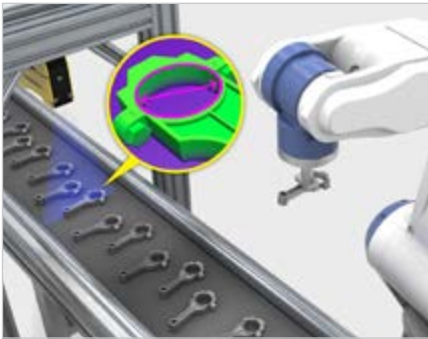
1920 points

FEATURES

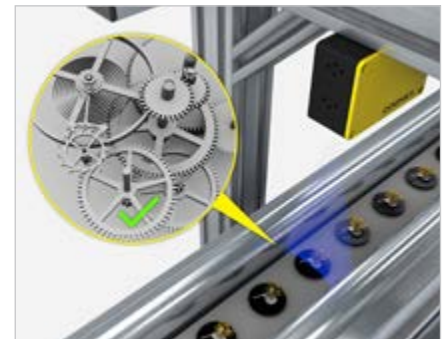
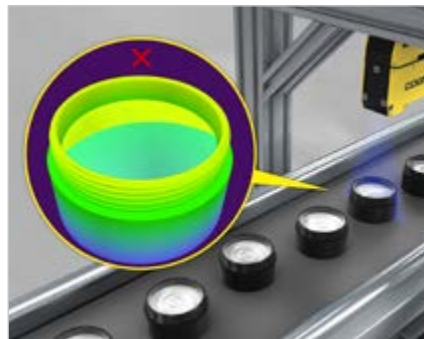
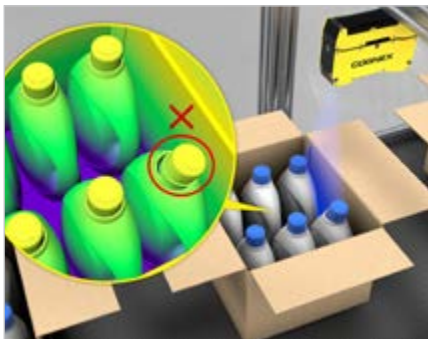


3D VISION APPLICATIONS

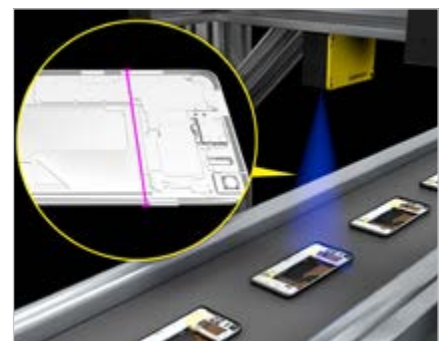
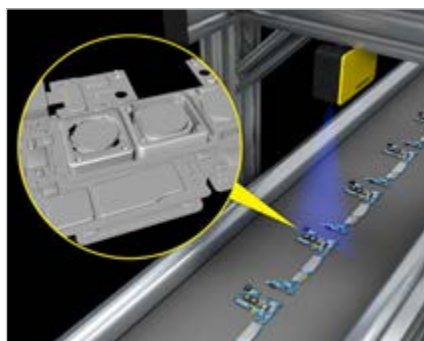
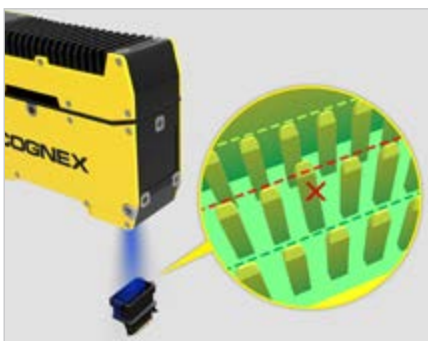
Automotive



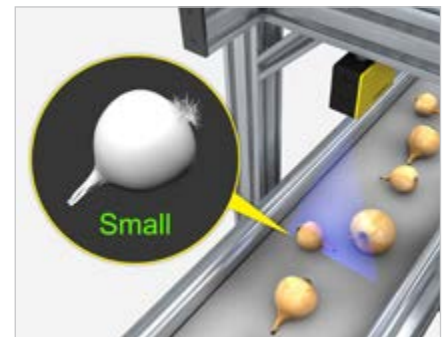
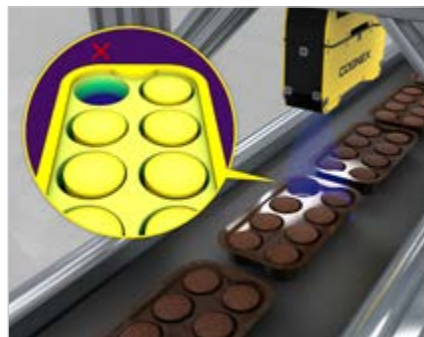
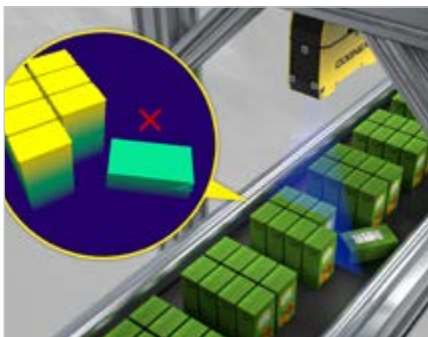
Consumer Packaged Goods



Electronics



Food & Beverage



3D VISION SYSTEMS SPECIFICATIONS

In-Sight 3D-L4000 Series and 3D-L4000 with VisionPro

	IS3D-L4050	IS3D-L4100	IS3D-L4300
3D Technology	Displacement Sensor		
Clearance Distance (CD)	92.00 mm (3.6 in)	130.00 mm (5.1 in)	180.00 mm (7.1 in)
Measurement Range (MR)	106.00 mm (4.2 in)	235.00 mm (9.3 in)	745.00 mm (29.3 in)
Near FOV	55.00 mm (2.2 in)	75.00 mm (3.0 in)	95.00 mm (3.7 in)
Far FOV	90.00 mm (3.5 in)	180.00 mm (7.1 in)	460.00 mm (18.1 in)
Resolution XY	30.2–49.5 μm	41.7–99.0 μm	54.2–260.4 μm
Resolution Z	2.5–6.9 μm	4.4–25.9 μm	6.9–147.5 μm
Acquisition Rate	Up to 4 kHz		
Protection	IP65		
Software	In-Sight 3D-L4000: In-Sight Vision Suite; 3D-L4000 with VisionPro: VisionPro & Cognex Designer™		

3D-A5000 Series

	3D-A5120	3D-A5060	3D-A5030	3D-A5005
3D Technology	3D LightBurst Technology™ Area Scan			
Clearance Distance (CD)	1000.0 mm (39.4 in)	1400.0 mm (55.1 in)	1465.0 mm (57.7 in)	299.3 mm (11.8 in)
Measurement Range (MR)	1000.0 mm (39.4 in)	400.0 mm (15.7 in)	80.0 mm (3.1 in)	12.0 mm (0.5 in)
Near FOV	900 x 675 mm (35.4 x 26.6 in)	520 x 390 mm (20.1 x 15.4 in)	280 x 210 mm (11.0 x 8.3 in)	60 x 44 mm (2.4 x 1.7 in)
Far FOV	1760 x 1320 mm (69.3 x 52 in)	645 x 490 mm (25.4 x 19.3 in)	285 x 216 mm (11.2 x 8.5 in)	65 x 46 mm (2.6 x 1.8 in)
Resolution XY	626–1223 μm	361–454 μm	195–200 μm	42–44 μm
Resolution Z	414–1656 μm	338–690 μm	178–213 μm	7–8 μm
Acquisition Time	200 msec			
Protection	IP65			
Software	VisionPro & Cognex Designer			

DS800

	DS810	DS820
3D Technology	Laser Displacement Sensor	
Clearance Distance (CD)	25 mm (1 in)	63 mm (2.5 in)
Measurement Range (MR)	5 mm (0.2 in)	16 mm (0.6 in)
Near FOV	10.5 mm (0.4 in)	22 mm (0.9 in)
Far FOV	11.5 mm (0.5 in)	28 mm (1.1 in)
Resolution XY	5.8–6.8 μm	11.5–14.5 μm
Resolution Z	0.37–0.45 μm	1.1 – 1.6 μm
Acquisition Rate	Up to 10 kHz	
Protection	IP65	
Software	VisionPro & Cognex Designer	

VISION SOFTWARE

Cognex vision software provides the power and flexibility to solve your most challenging machine vision applications on your own terms. Available in several formats, choose between programmatic or graphical user interfaces to meet your development needs and gain access to the industry's most robust vision tool libraries.

In-Sight Vision Suite

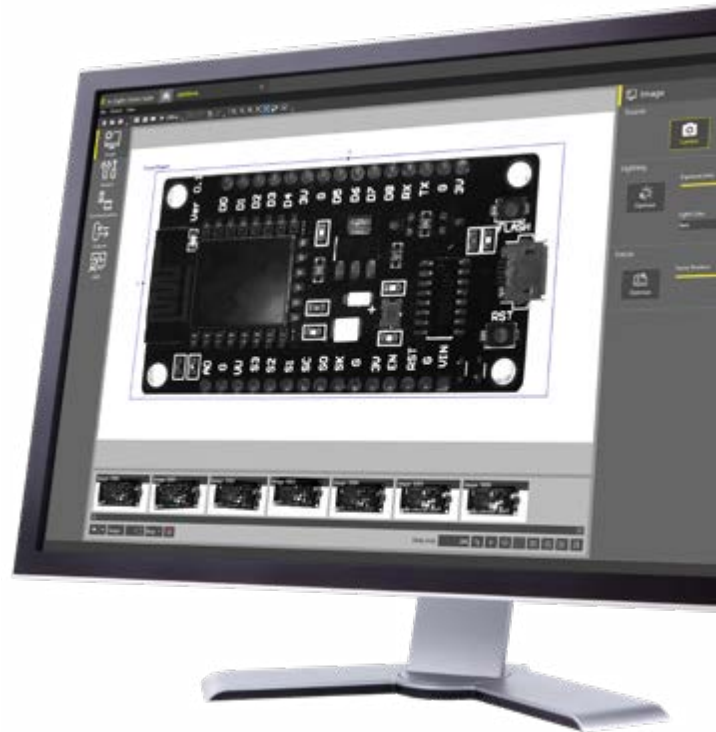
All In-Sight products, from vision sensors to vision systems, are configured with powerful, yet intuitive In-Sight Vision Suite software. The easy-to-use interface walks you step-by-step through the setup process and provides the power and flexibility of the vision spreadsheet for more complex applications. In-Sight Vision Suite also offers the widest range of built-in communication protocols that interface directly to any PLC, robot, or HMI on the factory network.

EasyBuilder

With point-and-click training, the intuitive EasyBuilder development environment guides users through setup, allowing both new and experienced operators to configure vision applications quickly and easily.

Spreadsheet

Access to the spreadsheet provides ultimate application development flexibility without programming.



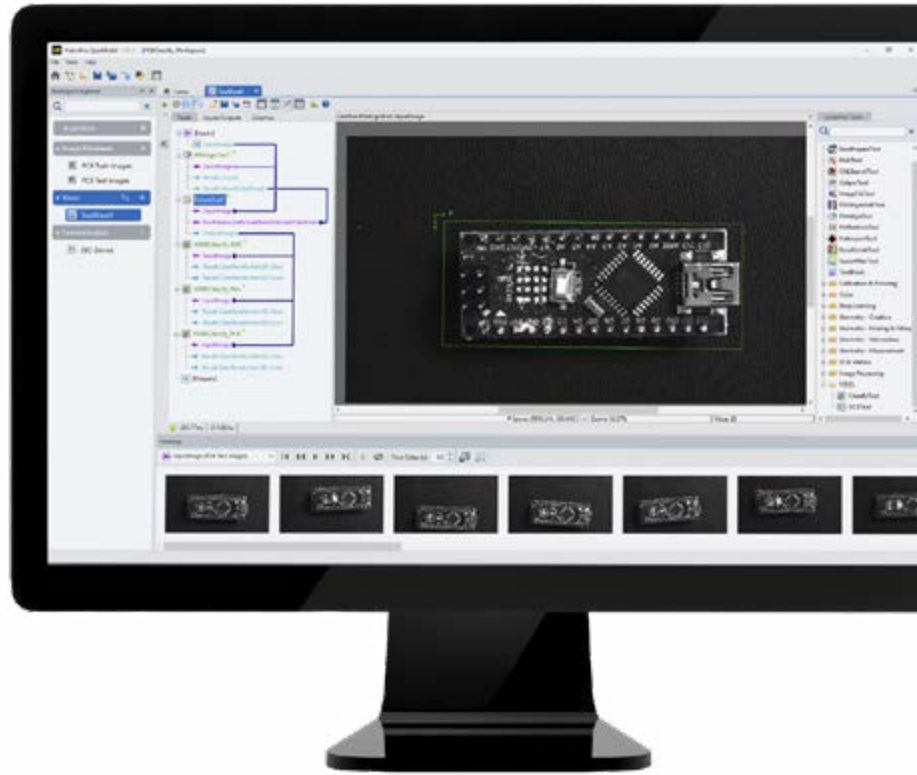
Easy-to-deploy HMI

Cognex In-Sight sensors and systems offer multiple runtime visualization options — available as a ready-to-deploy LCD touch panel and as a PC application, as well as a platform-independent Web HMI that runs in any internet browser. Both choices allow users to view inspection images and results and to modify setup parameters.



VisionPro

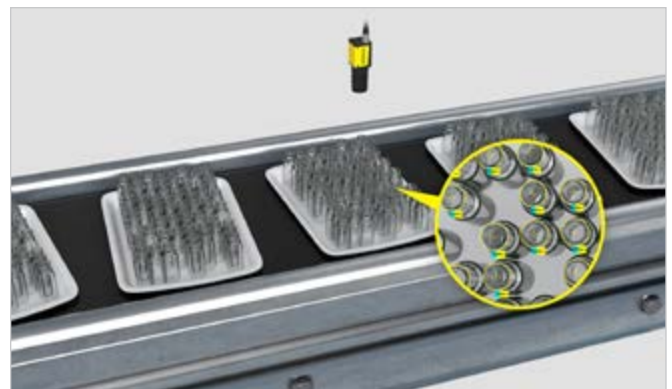
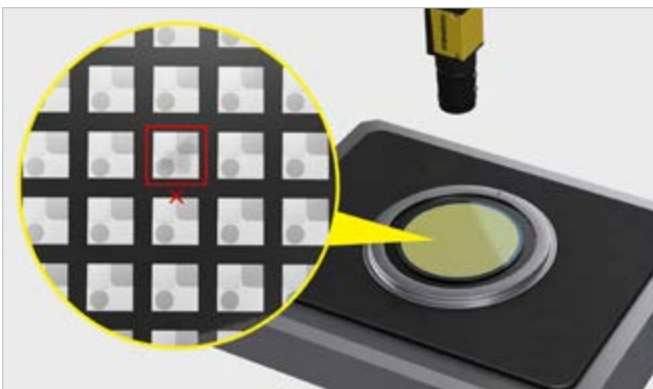
VisionPro® is a PC-based software combining best-in-class vision technologies in a graphical programming environment. Powerful enough to automate any vision task, VisionPro leverages extensive tool prototyping to enable rapid deployment of highly-customizable applications. With a future-oriented design that includes rule-based and hybrid smart tools, plus edge learning and deep learning capabilities, this innovative software makes it easy to configure jobs and generate inspection results, fast.



TOOL SET



Extensive library of AI- and rule-based tools tackle your toughest vision challenges



BUILD YOUR VISION

2D VISION SYSTEMS

Cognex machine vision systems are unmatched in their ability to inspect, identify and guide parts. They are easy to deploy and provide reliable, repeatable performance for common to complex tasks.

www.cognex.com/machine-vision



3D VISION SYSTEMS

Cognex laser profilers and area scan 3D vision systems provide ultimate ease of use, power and flexibility to achieve reliable and accurate measurement results for the most challenging 3D applications.

www.cognex.com/3D-vision-systems



VISION SOFTWARE

Cognex vision software provides industry leading vision technologies, from traditional machine vision to AI-based image analysis, to meet any development needs.

www.cognex.com/vision-software



BARCODE READERS

Cognex industrial barcode readers with patented algorithms provide the highest read rates for 1D, 2D and DPM codes regardless of the barcode symbology, size, quality, printing method or surface.

www.cognex.com/barcodereaders



COGNEX

Companies around the world rely on Cognex vision and barcode reading solutions to optimize quality, drive down costs and control traceability.

Corporate Headquarters One Vision Drive Natick, MA 01760 USA

Regional Sales Offices

Americas

North America +1 844-999-2469
Brazil +55 11 4210 3919
Mexico +800 733 4116

Europe

Austria +49 721 958 8052
Belgium +32 289 370 75
France +33 1 7654 9318
Germany +49 721 958 8052

Hungary +36 800 80291
Ireland +44 121 29 65 163
Italy +39 02 3057 8196
Netherlands +31 207 941 398
Poland +48 717 121 086
Spain +34 93 299 28 14
Sweden +46 21 14 55 88
Switzerland +41 445 788 877
Turkey +90 216 900 1696
United Kingdom +44 121 29 65 163

Asia

China +86 21 6208 1133
India +9120 4014 7840
Japan +81 3 5977 5400
Korea +82 2 539 9047
Malaysia +6019 916 5532
Singapore +65 632 55 700
Taiwan +886 3 578 0060
Thailand +66 88 7978924
Vietnam +84 2444 583358

© Copyright 2022, Cognex Corporation. All information in this document is subject to change without notice. Cognex, PatMax RedLine, PatMax, In-Sight, VisionPro, EasyBuilder, IDMax, 2DMax, PowerGrid, and Hotbars are registered trademarks of Cognex Corporation. Build Your Vision, ViDi, 1DMax, and SurfaceFX are trademarks of Cognex Corporation. All other trademarks are the property of their respective owners. Printed in the USA. Lit. No. VG9001-08-2022-EN

www.cognex.com