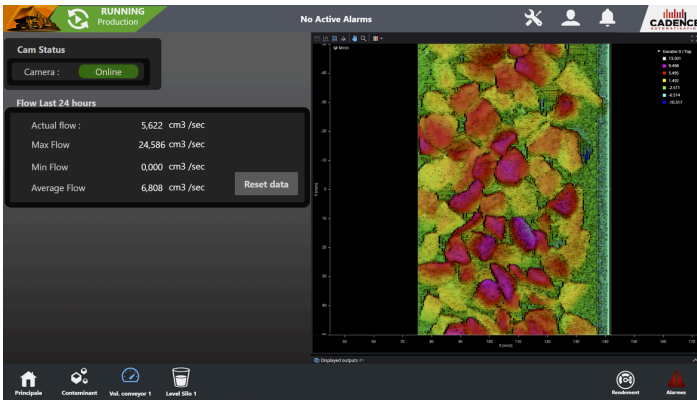


# MOD-MV-MC-211 MEASURING VOLUME OF MINERALS MODULE ON CONVEYOR



Pre-programmed and proven module for continuous measuring material volume on conveyors, enabling real-time monitoring of throughput, flow optimization, and proactive decision-making.



## Benefits & gains

- Accurate volume measurement to optimize production flow
- Optimization of equipment usage
- Traceability and performance analysis (OEE)



## Technical specifications

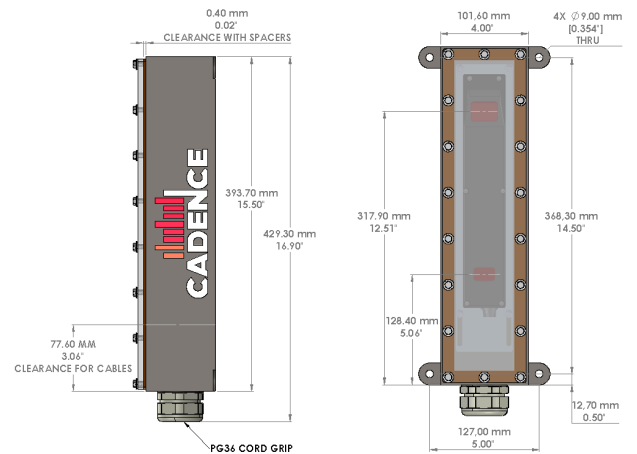
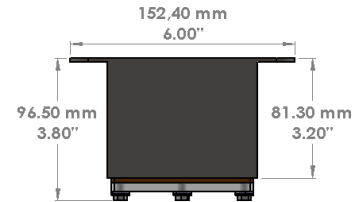
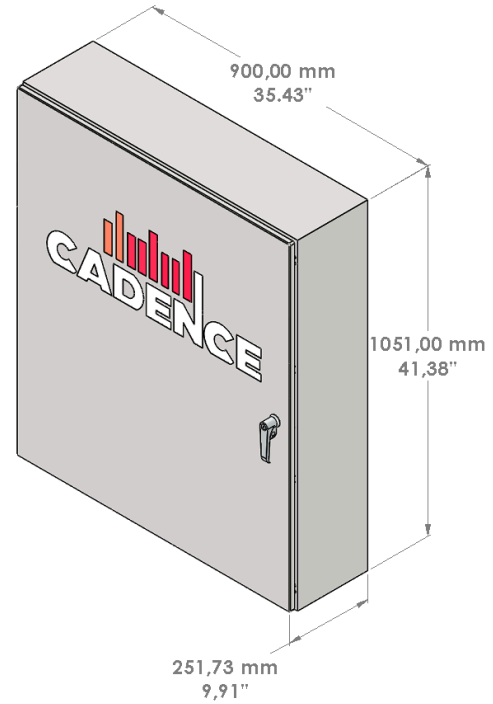
- Web-based HMI interface with secure remote access
- Multiple industrial communication protocols (including Ethernet/IP)
- Programmable inputs/outputs (I/O)
- Multi-camera module
- IP67 industrial panel, assembled and CSA certified

Scan me



# MEASURING VOLUME OF MINERALS ON CONVEYOR

FEATURES	
Variant	Robust system designed for harsh and abrasive environments
Technology	High-resolution laser triangulation
Capacity	Can cover a conveyor up to 4,200 mm wide
Laser class	3R
Laser color	Red 660 nm
PERFORMANCE	
Maximum conveyor speed	1,200 mm/s
X resolution	0.81 mm
Z resolution	0.57 mm
Field of view (FOV) [mm]	Can cover a conveyor up to 4,200 mm wide
INTERFACE	
Ethernet speed	Gigabit Ethernet - 1000 Mbit/s
Visualization	WEB HMI with secure password access via IP
Inputs	Differential encoder, laser safety enables, trigger 3
Outputs	2 digital outputs, 1 RS-485 serial port, 1 analog output (4-20 mA)
Communication protocol	Ethernet IP, Profinet, Modbus TCP, OPC UA, ASCII, TCP/IP, MQTT, HTTP, UDP
ENVIRONMENT	
Operating temperature	0 to 50 °C
Storage temperature	-30 to 70 °C
DIMENSIONS	
Panel (BJD4)	600 mm (L) × 760 mm (H) × 210 mm (D)
Camera enclosure	152,40 mm (L) X 429,30 (H) X 96,50 mm
Enclosure protection rating (IP)	Aluminium enclosure, IP67
Panel power supply	120 V AC
Current (A)	15 A



Scan me



866-419-8800

[info@cadenceautomation.ca](mailto:info@cadenceautomation.ca)